

# DOUBLE TREE PLAT NO. 5, A P.U.D.

"A PLAT OF PHASE II B"

BEING A PARCEL OF LAND LYING IN SECTION 1 AND 12, TOWNSHIP 39 SOUTH, RANGE 41 EAST, MARTIN COUNTY, FLORIDA.

JULY 1994

**CLERK'S RECORDING CERTIFICATE**

I, MARSHA STILLER, CLERK OF THE CIRCUIT COURT OF MARTIN COUNTY, FLORIDA, HEREBY CERTIFY THAT THIS PLAT WAS FILED FOR RECORD IN

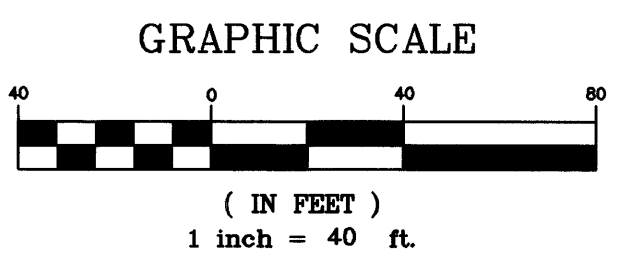
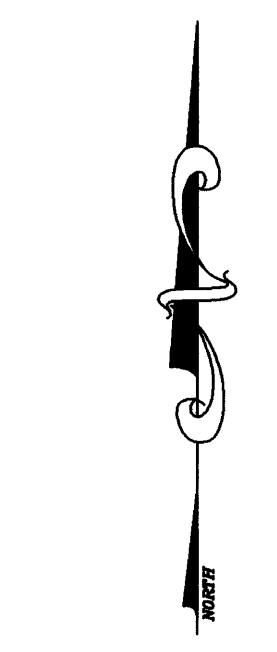
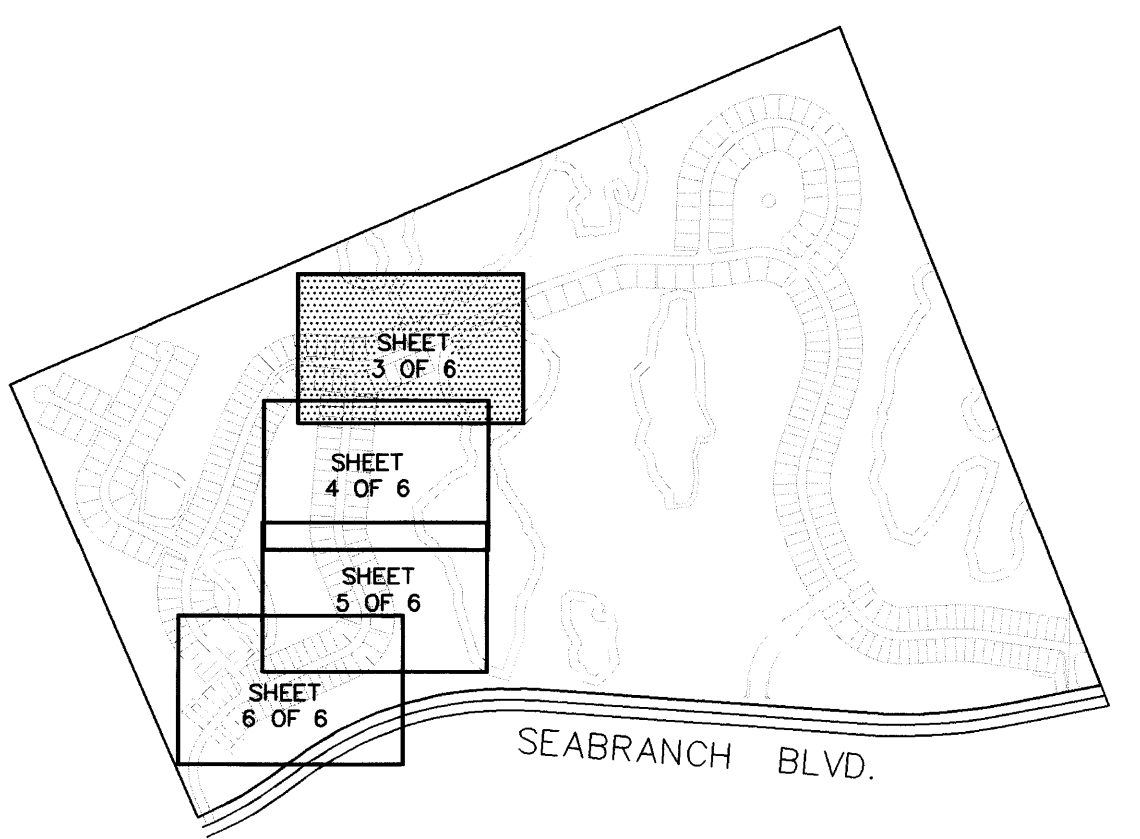
PLAT BOOK 13, PAGE 64, MARTIN COUNTY, FLORIDA, PUBLIC RECORDS THIS

31 DAY OF August, 1994

MARSHA STILLER, CLERK OF THE CIRCUIT COURT MARTIN COUNTY, FLORIDA.

FILE NUMBER 1079959 BY *Deborah L. Spanton* DEPUTY CLERK

SUBDIVISION PARCEL CONTROL NO.



**POINT OF COMMENCEMENT**

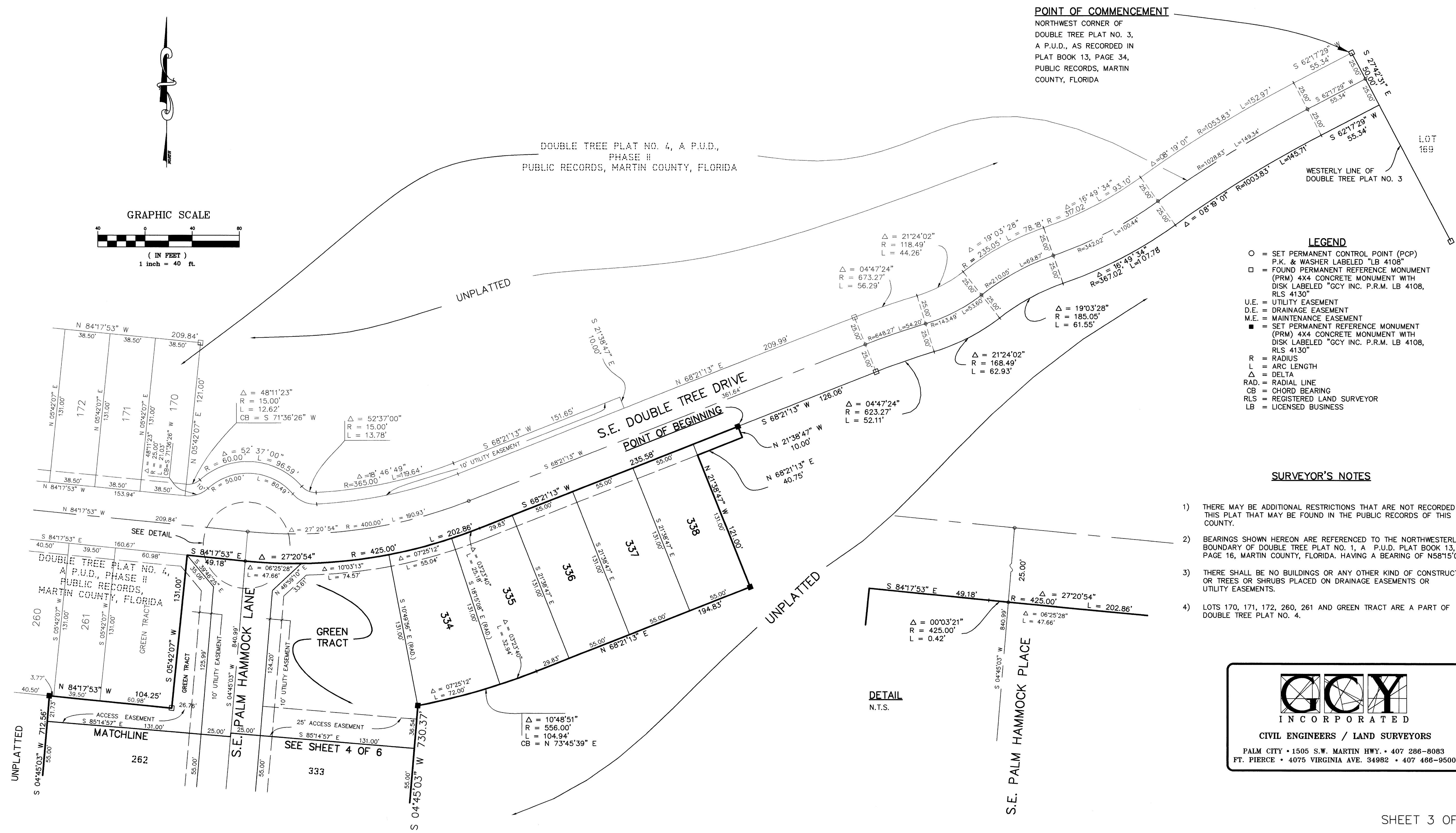
NORTHWEST CORNER OF DOUBLE TREE PLAT NO. 3, A P.U.D., AS RECORDED IN PLAT BOOK 13, PAGE 34, PUBLIC RECORDS, MARTIN COUNTY, FLORIDA

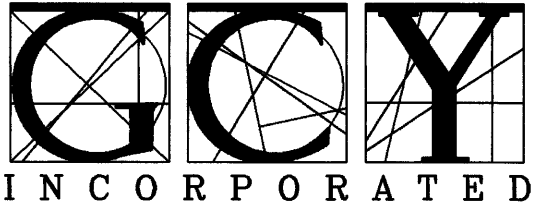
**LEGEND**

- = SET PERMANENT CONTROL POINT (PCP)
- = P.K. & WASHER LABELED "LB 4108"
- = FOUND PERMANENT REFERENCE MONUMENT (PRM) 4X4 CONCRETE MONUMENT WITH DISK LABELED "GCY INC. P.R.M. LB 4108, RLS 4130"
- U.E. = UTILITY EASEMENT
- D.E. = DRAINAGE EASEMENT
- M.E. = MAINTENANCE EASEMENT
- = SET PERMANENT REFERENCE MONUMENT (PRM) 4X4 CONCRETE MONUMENT WITH DISK LABELED "GCY INC. P.R.M. LB 4108, RLS 4130"
- R = RADIUS
- L = ARC LENGTH
- Δ = DELTA
- RAD. = RADIAL LINE
- CB = CHORD BEARING
- RLS = REGISTERED LAND SURVEYOR
- LB = LICENSED BUSINESS

**SURVEYOR'S NOTES**

- 1) THERE MAY BE ADDITIONAL RESTRICTIONS THAT ARE NOT RECORDED ON THIS PLAT THAT MAY BE FOUND IN THE PUBLIC RECORDS OF THIS COUNTY.
- 2) BEARINGS SHOWN HEREON ARE REFERENCED TO THE NORTHWESTERLY BOUNDARY OF DOUBLE TREE PLAT NO. 1, A P.U.D. PLAT BOOK 13, PAGE 16, MARTIN COUNTY, FLORIDA. HAVING A BEARING OF N58°15'00" W.
- 3) THERE SHALL BE NO BUILDINGS OR ANY OTHER KIND OF CONSTRUCTION OR TREES OR SHRUBS PLACED ON DRAINAGE EASEMENTS OR UTILITY EASEMENTS.
- 4) LOTS 170, 171, 172, 260, 261 AND GREEN TRACT ARE A PART OF DOUBLE TREE PLAT NO. 4.





**GCY**  
INCORPORATED

CIVIL ENGINEERS / LAND SURVEYORS

PALM CITY • 1505 S.W. MARTIN HWY. • 407 286-8083  
FT. PIERCE • 4075 VIRGINIA AVE. 34982 • 407 466-9500